



Gebr. Becker GmbH & Co.KG

Hölker Feld 29-31

D-42279 Wuppertal



Ersatzteilliste

Spare parts list

Liste de pièces de rechange

Listino pezzi di ricambio

Lista de piezas de recambio

Lista de peças sobresselentes

Reserveonderdelenlijst

Reservedelsliste

Reservdelslista

Reservedelsliste

Varaosaluettelo

Wykaz części zamiennych

Seznam náhradních dílů

Tartalékalkatrész lista

Κατάλογος ανταλλακτικών

Перечень запасных частей

备用零件目录

スペアパーツリスト

SV 8.400



28011700000 01/2005

? i
SERVICE

Made in Germany	Baujahr/year	XXXX
BECKER	No	XXXXXXXX
D-42279 Wuppertal	Typ	SV 8.400-XX ← Option
CE	Drehzahl / speed	XXXX min ⁻¹
	Leistungsbedarf motor power required	XXXX kW
	Saugvermögen inlet capacity	XXXX m ³ /h
	Saugdruck / vacuum	XXXX mbar


www.BF 1.08

Ⓛ Service:
Tel: +49 (0)202 697-171
Fax: +49 (0)202 64 44 74
E-Mail: info@becker-international.com
 www.becker-international.com


Index	Pos.	Bestell Nr.	Beschreibung 
SV 8.400	8	570400 41600	UMBAUSATZ /1⇒ /2 (POS: 64, 104, 181, 182, 183, 185, 187, 188)
	27	000100 41600	GEHÄUSE
	27	000102 41600	GEHÄUSE (SV8.400/2-500+501)
	29	911310 00000	DICHTUNGSSCHLAUCH
	30	951707 00000	FEDERSCHEIBE
	31	945337 00000	INNENSECHSKANTSCHRAUBE
	48	947742 00000	PASSFEDER
	49	000600 41600	LAUFRAD
	50	013900 41600	DISTANZBUCHSE
	51	001100 41600	LAGERDECKEL
	53	906625 00000	LAGER
	54	016800 41600	SPANNSCHEIBE
	55	901806 00000	WELLENENDSCHRAUBE
	58	911433 00000	ZWISCHENLEGRING 40x70x0,025
	59	911434 00000	ZWISCHENLEGRING 40x70x0,05
	60	911435 00000	ZWISCHENLEGRING 40x70x0,1
	61	911436 00000	ZWISCHENLEGRING 40x70x0,2
	63	000200 41600	GEHÄUSEDECKEL
	63	000202 41600	GEHÄUSEDECKEL (SV8.400/2-500+501)
	64	951703 00000	FEDERSCHEIBE
65	945327 00000	INNENSECHSKANTSCHRAUBE	
68	945322 00000	INNENSECHSKANTSCHRAUBE	
101	007400 41600	SCHALLDÄMPFERGEHÄUSE	
102	007600 71000	SIEBROHR	
103	007700 16600	DÄMPFER	
104	907500 41600	DICHTUNG	
105	007800 41600	ANSCHLUSSFLANSCH	
107	949451 00000	UNTERLEGSCHLEIFE	


Index	Pos.	Bestell Nr.	Beschreibung 
SV 8.400	108	003808 94000	ZUGANKERSCHRAUBE
	109	903812 01000	ZUGANKERSCHRAUBEN
	181	907501 41600	DICHTUNG
	182	015500 41600	REDUZIERSTÜCK
	183	005601 41600	DECKEL
	185	005600 41600	DECKEL
	187	945371 00000	INNENSECHSKANTSCHRAUBE
	188	945320 00000	INNENSECHSKANTSCHRAUBE
	201	015100 41600	GERÄTEFUSS
	202	947504 00000	UNTERLEGSCHLEIFE
	204	210502 00117	KABELTÜLLE
	215	741310 10000	GUMMIPUFFER


Zeichnung - siehe Anhang 

Index	Pos.	Ident No.	Description 
SV 8.400	8	570400 41600	CONVERSION SET /1⇒/2 (POS: 64, 104, 181, 182, 183, 185, 187, 188)
	27	000100 41600	PUMP BODY
	27	000102 41600	PUMP BODY (SV8.400/2-500+501)
	29	911310 00000	SEAL
	30	951707 00000	SPRING DISC
	31	945337 00000	SOCKET HEAD SCREW
	48	947742 00000	KEY
	49	000600 41600	IMPELLER
	50	013900 41600	SPACER
	51	001100 41600	BEARING COVER
	53	906625 00000	BALL BEARING
	54	016800 41600	CLAMPING DISC
	55	901806 00000	SHAFT END SCREW
	58	911433 00000	SPACER 40x70x0,025
	59	911434 00000	SPACER 40x70x0,05
	60	911435 00000	SPACER 40x70x0,1
	61	911436 00000	SPACER 40x70x0,2
	63	000200 41600	HOUSING LID
	63	000202 41600	HOUSING LID (SV8.400/2-500+501)
	64	951703 00000	LOCKING WASHER
	65	945327 00000	SOCKET HEAD SCREW
	68	945322 00000	SOCKET HEAD SCREW
	101	007400 41600	SILENCER HOUSING
	102	007600 71000	STRAINER TUBE
	103	007700 16600	SILENCER SPONGE
	104	907500 41600	GASKET
	105	007800 41600	CONNECTING FLANGE
107	949451 00000	WASHER	

Index	Pos.	Ident No.	Description 
SV 8.400	108	003808 94000	SCREW
	109	903812 01000	ANCHORING SCREW
	181	907501 41600	GASKET
	182	015500 41600	REDUCING PIECE
	183	005601 41600	COVER
	185	005600 41600	COVER
	187	945371 00000	SOCKET HEAD SCREW
	188	945320 00000	SOCKET HEAD SCREW
	201	015100 41600	FOOT
	202	947504 00000	WASHER
	204	210502 00117	RUBBER BUSHING
	215	741310 10000	RUBBER BUFFER


Drawing - see appendix 

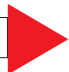
Index	Pos.	No. Identification	Designation 
SV 8.400	8	570400 41600	ÉQUIPEMENT DE CONVERSION /1⇒/2 (POS: 64, 104, 181, 182, 183, 185, 187, 188)
	27	000100 41600	CORP DE POMPE
	27	000102 41600	CORP DE POMPE (SV8.400/2-500+501)
	29	911310 00000	JOINT
	30	951707 00000	DISQUE DE RESSORT
	31	945337 00000	VIS HEXAGONALE INTERNE
	48	947742 00000	CLAVETTE
	49	000600 41600	ROUE
	50	013900 41600	DOUILLE ETANCHEITE
	51	001100 41600	COUVERCLE DE ROULEMENTE
	53	906625 00000	ROULEMENT A BILLES
	54	016800 41600	DISQUE DE SERRAGE
	55	901806 00000	VIS BOUT D'ARBRE
	58	911433 00000	DISQUE AJUSTAGE 40x70x0,025
	59	911434 00000	DISQUE AJUSTAGE 40x70x0,05
	60	911435 00000	DISQUE AJUSTAGE 40x70x0,1
	61	911436 00000	DISQUE AJUSTAGE 40x70x0,2
	63	000200 41600	COUVERCLE
	63	000202 41600	COUVERCLE (SV8.400/2-500+501)
	64	951703 00000	RONDELLE À RESSORT
	65	945327 00000	VIS HEXAGONALE INTERNE
	68	945322 00000	VIS HEXAGONALE INTERNE
	101	007400 41600	CARCASSE SILENCIEUX
	102	007600 71000	GRILLE POUR SILENCIEUX
	103	007700 16600	MOUSSE POUR SILENCIEUX
	104	907500 41600	JOINT
	105	007800 41600	BRIDE DE RACCORDEMENT
107	949451 00000	RONDELLE	

Index	Pos.	No. Identification	Designation 
SV 8.400	108	003808 94000	VIS
	109	903812 01000	VIS D'ANCRAGE
	181	907501 41600	JOINT
	182	015500 41600	PIECE DE REDUCTION
	183	005601 41600	COUVERCLE
	185	005600 41600	COUVERCLE
	187	945371 00000	VIS HEXAGONALE INTERNE
	188	945320 00000	VIS HEXAGONALE INTERNE
	201	015100 41600	PIED
	202	947504 00000	RONDELLE
	204	210502 00117	PROTECTION EN CAOUTCHOUC
	215	741310 10000	AMORTISSEUR EN CAOUTCHOUC


plan - voir annexe 

Index	Pos.	No. Identificazione	Designazione 
SV 8.400	8	570400 41600	LOTTO DI TRASFORMAZIONE /1⇒/2 (POS: 64, 104, 181, 182, 183, 185, 187, 188)
	27	000100 41600	CARCASSA
	27	000102 41600	CARCASSA (SV8.400/2-500+501)
	29	911310 00000	GUARNIZIONE
	30	951707 00000	DISCO A MOLLA
	31	945337 00000	VITE ESAGONALE INTERNA
	48	947742 00000	CHIAVETTA
	49	000600 41600	GIRANTE
	50	013900 41600	BOCCOLA
	51	001100 41600	COPERCHIO CUSCINETTO
	53	906625 00000	CUSCINETTO A SFERA
	54	016800 41600	DISCO DI FISSAGGIO
	55	901806 00000	VITE DI CHIUSURA ALBERO
	58	911433 00000	DISCO GIUOCO 40x70x0,025
	59	911434 00000	DISCO GIUOCO 40x70x0,05
	60	911435 00000	DISCO GIUOCO 40x70x0,1
	61	911436 00000	DISCO GIUOCO 40x70x0,2
	63	000200 41600	COPERCHIO
	63	000202 41600	COPERCHIO (SV8.400/2-500+501)
	64	951703 00000	DISCO A MOLLA
	65	945327 00000	VITE ESAGONALE INTERNA
	68	945322 00000	VITE ESAGONALE INTERNA
	101	007400 41600	CARCASSA SILENZIATORE
	102	007600 71000	TUBO-CRIVELLO
	103	007700 16600	MATERIALE PER SILENZIATORE
	104	907500 41600	GUARNIZIONE
	105	007800 41600	FLANGIA DI RACCORDO
107	949451 00000	RONDELLA	

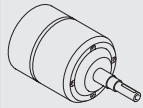
Index	Pos.	No. Identificazione	Designazione 
SV 8.400	108	003808 94000	VITE
	109	903812 01000	CHIAVARDA D'ANCORAGGIO
	181	907501 41600	GUARNIZIONE
	182	015500 41600	GIUNTO DI RIDUZIONE
	183	005601 41600	COPERCHIO
	185	005600 41600	COPERCHIO
	187	945371 00000	VITE ESAGONALE INTERNA
	188	945320 00000	VITE ESAGONALE INTERNA
	201	015100 41600	PIEDE
	202	947504 00000	RONDELLA
	204	210502 00117	PROTEZIONE IN GOMMA
	215	741310 10000	AMMORTIZZATORE IN GOMMA

Disegno - vedere allegato 

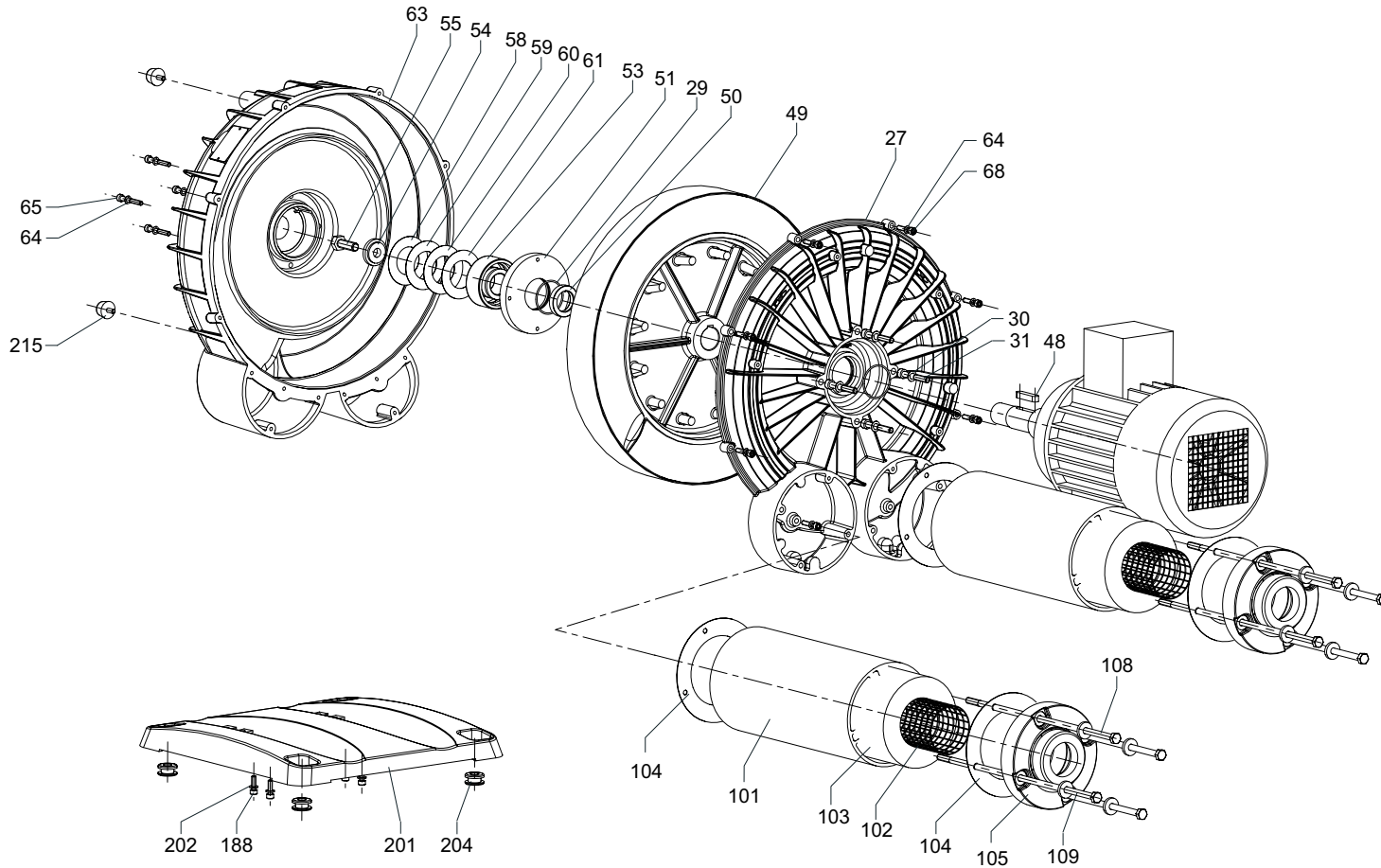
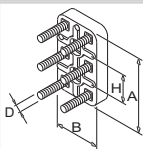
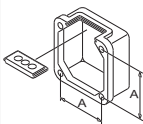
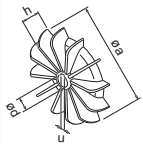
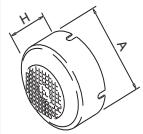
Index	Pos.	No. De pedido	Descripción 
SV 8.400	8	570400 41600	EQUIPO PARA LA CONVERSIÓN /1⇒/2 (POS: 64, 104, 181, 182, 183, 185, 187, 188)
	27	000100 41600	CARCASA
	27	000102 41600	CARCASA (SV8.400/2-500+501)
	29	911310 00000	MANGUERA DE JUNTA
	30	951707 00000	ARANDELA ELÁSTICA
	31	945337 00000	TORNILLO HEXAGONAL INTERIOR
	48	947742 00000	LENGÜETA DE AJUSTE
	49	000600 41600	RUEDA CORREDERA
	50	013900 41600	CASQUILLO DISTANCIADOR
	51	001100 41600	TAPA DE COJINETE
	53	906625 00000	COJINETE DE RODAMIENTO
	54	016800 41600	ARANDELA TENSORA
	55	901806 00000	TORNILLO TERMINAL DE ÁRBOL
	58	911433 00000	ARANDELA DISTANCIADORA 40x70x0,025
	59	911434 00000	ARANDELA DISTANCIADORA 40x70x0,5
	60	911435 00000	ARANDELA DISTANCIADORA 40x70x0,1
	61	911436 00000	ARANDELA DISTANCIADORA 40x70x0,2
	63	000200 41600	TAPA DE CARCASA
	63	000202 41600	TAPA DE CARCASA (SV8.400/2-500+501)
	64	951703 00000	ARANDELA ELÁSTICA
	65	945327 00000	TORNILLO HEXAGONAL INTERIOR
	68	945322 00000	TORNILLO HEXAGONAL INTERIOR
	101	007400 41600	CARCASA DE SILENCIADOR
	102	007600 71000	TUBO DE CRIBA
	103	007700 16600	AMORTIGUADOR
	104	907500 41600	JUNTA
	105	007800 41600	BRIDA DE EMPALME
107	949451 00000	ARANDELA	

Index	Pos.	No. De pedido	Descripción 
SV 8.400	108	003808 94000	TORNILLO TIRANTE
	109	903812 01000	TORNILLO DE ANCLAJE
	181	907501 41600	JUNTA
	182	015500 41600	PIEZA DE REDUCCIÓN
	183	005601 41600	TAPA
	185	005600 41600	TAPA
	187	945371 00000	TORNILLO HEXAGONAL INTERIOR
	188	945320 00000	TORNILLO HEXAGONAL INTERIOR
	201	015100 41600	PIE
	202	947504 00000	ARANDELA
	204	210502 00117	BOQUILLA DE CABLE
	215	741310 10000	AMORTIGUADOR DE GOMA

Dibujo - véase apéndice 



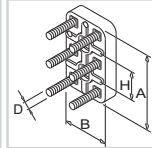
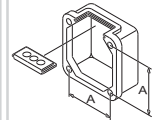
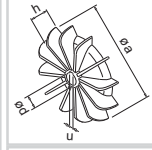
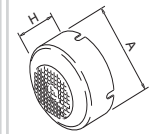
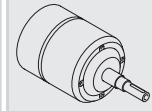
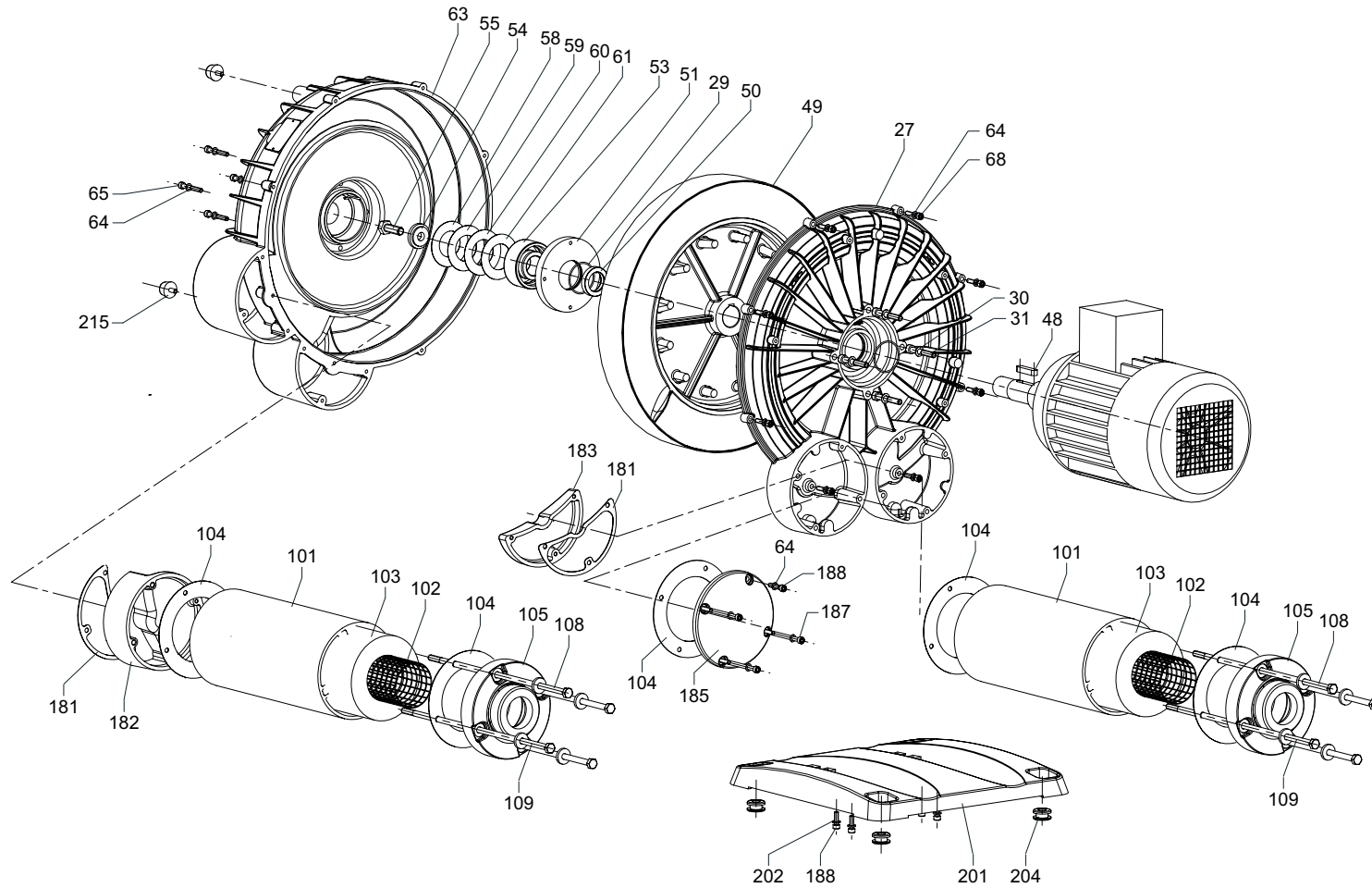
SERVICE ?



SV 8.400/1

SV 8.400/2

SV 8.400/2



SV 8.400/1