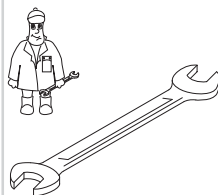




Gebr. Becker GmbH & Co.KG  
Hölker Feld 29-31  
D-42279 Wuppertal

**Wartung**  
**Maintenance**  
**Entretien**  
**Manutenzione**  
**Mantenimiento**



	Pos.	Menge * Quantity * Quantité * Quantità * Cantidad *	Bestell-Nr. Ident No. No. Identification No. Identificazione No. de pedido	Bezeichnung Description Designation Designazione Descripción
<b>T 4.10 DV</b>	24	7	901327 00000	Schieber, Rotor Vane, Palette, Silenciador
	72	1	909518 00000	Filterpatrone, Filter cartridge, Cartouche Filtrante, Cartuccia filtro, Cartucho de filtro
	74	1	909554 00000	Filterpatrone, Filter cartridge, Cartouche Filtrante, Cartuccia filtro, Cartucho de filtro
<b>T 4.16 DV</b>	24	7	901347 00000	Schieber, Rotor Vane, Palette, Silenciador
	72	1	909519 00000	Filterpatrone, Filter cartridge, Cartouche Filtrante, Cartuccia filtro, Cartucho de filtro
	74	1	909542 00000	Filterpatrone, Filter cartridge, Cartouche Filtrante, Cartuccia filtro, Cartucho de filtro

\* erforderlich / necessary / nécessaire / necessaria / necesaria



Ersatzteilliste  
Spare parts list  
Liste de pièces de rechange  
Listino pezzi di ricambio  
Lista de piezas de recambio  
Lista de peças sobresselentes  
Reserveonderdelenlijst  
Reservedelsliste  
Reservdelslista

Reservedelsliste  
Varaosaluettelo  
Wykaz części zamiennych  
Seznam náhradních dílů  
Tartalékalkatrész lista  
Κατάλογος ανταλλακτικών  
Перечень запасных частей  
备用零件目录  
スペアパーツリスト

**T 4.10 DV**  
**T 4.16 DV**

28 0104 00000 10/2004



**SERVICE**

Made in Germany

**BECKER** Baujahr/year XXXX

D 42279 Wuppertal No. XXXXXXX

Typ T 4.16DV-XX ← Option

Drehzahl / speed XXXX min<sup>-1</sup>

Leistungsbedarf motor power required XXXX kW

Saugvermögen inlet capacity XXXX m<sup>3</sup>/h

Saugdruck / vacuum XXXX mbar

www.becker-international.com


**Service:**

**Tel:** +49 (0)202 697-171

**Fax:** +49 (0)202 64 44 74

**E-Mail:** info@becker-international.com

[www.becker-international.com](http://www.becker-international.com)

Index	Pos.	Bestell Nr.	Beschreibung 
<b>T 4.10 DV</b>	15	020000 16200	KOLBEN
	16	016800 05000	SPANNSCHEIBE
	17	911001 00000	STAR-TOLERANZRING
	18	949203 00000	ZAHNSCHEIBE
	19	945320 00000	INNENSECHSKANTSCHRAUBE
	21	000100 16200	GEHÄUSE
	23	945319 00000	INNENSECHSKANTSCHRAUBE
	24	901327 00000	<b>SCHIEBER, KOHLE (7x)<sup>1)</sup></b>
	28	000700 16200	SEITENDECKEL
	29	945364 00000	INNENSECHSKANTSCHRAUBE
	30	008901 16200	DICHTUNG
	61	004800 27300	FILTERDECKEL
	67	009000 16300	ANPRESSFEDER
	69	952009 00000	SPANNHÜLSE
	72	909518 00000	<b>FILTERPATRONE C 44 (1x)<sup>1)</sup></b>
	74	909554 00000	<b>PATRONE-"C"-ABSCHIEDER 35015 (1x)<sup>1)</sup></b>
	76	945364 00000	INNENSECHSKANTSCHRAUBE
	77	948021 00000	DICHTRING
	78	913161 00000	O-RING
	83	006800 27300	GERÄTEHAUBE
84	060901 16300	DÄMPFUNGSSTREIFEN	
85	741310 50000	GUMMIPUFFER	
86	949402 00000	UNTERLEGSCHLEIFE	
87	947001 00000	SECHSKANTMUTTER	
88	006801 27400	FRONTHAUBE	
89	741309 00000	GUMMIPUFFER	
90	945318 00000	INNENSECHSKANTSCHRAUBE	
91	951922 00000	GUMMIFORMTEIL	
94	015100 27300	MOTORFUSS	
95	951921 00000	GUMMIFORMTEIL	
96	068000 27600	DISTANZSTÜCK	
97	945363 00000	INNENSECHSKANTSCHRAUBE	
98	949451 00000	UNTERLEGSCHLEIFE	
102	968104 00000	GUMMI-DISTANZSTÜCK	
103	029600 16300	BOLZEN	
126	736000 99613	VAKUUMREGULIERVENTIL	
127	728002 99611	DRUCKREGULIERVENTIL	

<sup>1)</sup> erforderliche Bestellmenge / Wartung

**T 4.10 DV** (1~) Ausführung - Einphasenwechselstrom

Abweichende Positionen zum Standardgerät - siehe Anhang (Zeichnungsrückseite) 

OPTIONAL


Index	Pos.	Bestell Nr.	Beschreibung 
<b>T 4.16 DV</b>	15	020000 16300	KOLBEN
	16	016800 16300	SPANNSCHEIBE
	17	911009 00000	STAR-TOLERANZRING
	18	949203 00000	ZAHNSCHEIBE
	19	945320 00000	INNENSECHSKANTSCHRAUBE
	21	000105 16300	GEHÄUSE
	23	945321 00000	INNENSECHSKANTSCHRAUBE
	24	901347 00000	<b>SCHIEBER, KOHLE (7x)<sup>1)</sup></b>
	28	000705 16300	SEITENDECKEL
	29	945372 00000	INNENSECHSKANTSCHRAUBE
	30	008901 16300	DICHTUNG
	61	004800 27400	FILTERDECKEL
	67	009000 16300	ANPRESSFEDER
	69	952009 00000	SPANNHÜLSE
	72	909519 00000	<b>FILTERPATRONE C 64/3 (1x)<sup>1)</sup></b>
	74	909542 00000	<b>PATRONE-"C"-ABSCHIEDER C 63 (1x)<sup>1)</sup></b>
	76	945325 00000	INNENSECHSKANTSCHRAUBE
	77	948021 00000	DICHTRING
	78	913161 00000	O-RING
	83	006800 27400	GERÄTEHAUBE
84	060901 16300	DÄMPFUNGSSTREIFEN	
85	741310 50000	GUMMIPUFFER	
86	949402 00000	UNTERLEGSCHLEIFE	
87	947001 00000	SECHSKANTMUTTER	
88	006801 27400	FRONTHAUBE	
89	741310 90000	GUMMIPUFFER	
90	945318 00000	INNENSECHSKANTSCHRAUBE	
91	951922 00000	GUMMIFORMTEIL	
94	015100 27400	MOTORFUSS	
95	951921 00000	GUMMIFORMTEIL	
96	068000 27600	DISTANZSTÜCK	
97	945323 00000	INNENSECHSKANTSCHRAUBE	
98	949451 00000	UNTERLEGSCHLEIFE	
102	968104 00000	GUMMI-DISTANZSTÜCK	
103	029600 16300	BOLZEN	
126	736000 99613	VAKUUMREGULIERVENTIL	
127	728002 99611	DRUCKREGULIERVENTIL	

<sup>1)</sup> erforderliche Bestellmenge / Wartung

**T 4.16 DV** (1~) Ausführung - Einphasenwechselstrom

Abweichende Positionen zum Standardgerät - siehe Anhang (Zeichnungsrückseite) 

OPTIONAL


Index	Pos.	Ident No.	Description 
<b>T 4.10 DV</b>	15	020000 16200	ROTOR
	16	016800 05000	CLAMPING DISC
	17	911001 00000	STAR-TOLERANCE-RING
	18	949203 00000	TOOTHED SPRING WASHER
	19	945320 00000	SOCKET HEAD SCREW
	21	000100 16200	PUMP BODY
	23	945319 00000	SOCKET HEAD SCREW
	24	901327 00000	<b>CARBON VANES (7x)<sup>1)</sup></b>
	28	000700 16200	LID
	29	945364 00000	SOCKET HEAD SCREW
	30	008901 16200	GASKET
	61	004800 27300	FILTER COVER
	67	009000 16300	LEAF SPRING
	69	952009 00000	LOCATING PEG
	72	909518 00000	<b>FILTER CARTRIDGE C 44 (1x)<sup>1)</sup></b>
	74	909554 00000	<b>FILTER CARTRIDGE 35015 (1x)<sup>1)</sup></b>
	76	945364 00000	SOCKET HEAD SCREW
	77	948021 00000	SEALING RING
	78	913161 00000	O-RING
	83	006800 27300	PROTECTING HOOD
	84	060901 16300	ANTIVIBRATING STRIP
	85	741310 50000	RUBBER BUFFER
	86	949402 00000	WASHER
	87	947001 00000	HEX.NUT
	88	006801 27400	PROTECTING HOOD
	89	741309 00000	RUBBER BUFFER
	90	945318 00000	SOCKET HEAD SCREW
91	951922 00000	RUBBER ELEMENT	
94	015100 27300	FOOT	
95	951921 00000	RUBBER ELEMENT	
96	068000 27600	SPACING COLLAR	
97	945363 00000	SOCKET HEAD SCREW	
98	949451 00000	WASHER	
102	968104 00000	RUBBER DISTANCE UNIT	
103	029600 16300	BOLT	
126	736000 99613	VACUUM REGULATING VALVE	
127	728002 99611	PRESSURE REGULATING VALVE	

<sup>1)</sup> necessary order quantity / maintenance

**T 4.10 DV** (1~) Design - single-phase AC

Items different from standard appliance see appendix (back of drawing) 

OPTIONAL

Index	Pos.	Ident No.	Description 
<b>T 4.16 DV</b>	15	020000 16300	ROTOR
	16	016800 16300	CLAMPING DISC
	17	911009 00000	STAR-TOLERANCE-RING
	18	949203 00000	TOOTHED SPRING WASHER
	19	945320 00000	SOCKET HEAD SCREW
	21	000105 16300	PUMP BODY
	23	945321 00000	SOCKET HEAD SCREW
	24	901347 00000	<b>CARBON VANES (7x)<sup>1)</sup></b>
	28	000705 16300	LID
	29	945372 00000	SOCKET HEAD SCREW
	30	008901 16300	GASKET
	61	004800 27400	FILTER COVER
	67	009000 16300	LEAF SPRING
	69	952009 00000	LOCATING PEG
	72	909519 00000	<b>FILTER CARTRIDGE C 64/3 (1x)<sup>1)</sup></b>
	74	909542 00000	<b>FILTER CARTRIDGE C 63 (1x)<sup>1)</sup></b>
	76	945325 00000	SOCKET HEAD SCREW
	77	948021 00000	SEALING RING
	78	913161 00000	O-RING
	83	006800 27400	PROTECTING HOOD
	84	060901 16300	ANTIVIBRATING STRIP
	85	741310 50000	RUBBER BUFFER
	86	949402 00000	WASHER
	87	947001 00000	HEX.NUT
	88	006801 27400	PROTECTING HOOD
	89	741310 90000	RUBBER BUFFER
	90	945318 00000	SOCKET HEAD SCREW
91	951922 00000	RUBBER ELEMENT	
94	015100 27400	FOOT	
95	951921 00000	RUBBER ELEMENT	
96	068000 27600	SPACING COLLAR	
97	945323 00000	SOCKET HEAD SCREW	
98	949451 00000	WASHER	
102	968104 00000	RUBBER DISTANCE UNIT	
103	029600 16300	BOLT	
126	736000 99613	VACUUM REGULATING VALVE	
127	728002 99611	PRESSURE REGULATING VALVE	

<sup>1)</sup> necessary order quantity / maintenance

**T 4.16 DV** (1~) Design - single-phase AC

Items different from standard appliance see appendix (back of drawing) 

OPTIONAL

Index	Pos.	No. Identification	Designation
<b>T 4.10 DV</b>	15	020000 16200	PISTON
	16	016800 05000	DISQUE DE SERRAGE
	17	911001 00000	BAGUE STAR
	18	949203 00000	DENT DISQUE
	19	945320 00000	VIS HEXAGONALE INTERNE
	21	000100 16200	CORP DE POMPE
	23	945319 00000	VIS HEXAGONALE INTERNE
	24	901327 00000	<b>PALETTE DE CHARBON (7x)<sup>1)</sup></b>
	28	000700 16200	COUVERCLE
	29	945364 00000	VIS HEXAGONALE INTERNE
	30	008901 16200	JOINT
	61	004800 27300	COUVERCLE DU FILTRE
	67	009000 16300	RESSORT-JAME
	69	952009 00000	DOVILLE DE ETRAGE
	72	909518 00000	<b>CARTOUCHE FILTRANTE C 44 (1x)<sup>1)</sup></b>
	74	909554 00000	<b>CARTOUCHE FILTRANTE 35015 (1x)<sup>1)</sup></b>
	76	945364 00000	VIS HEXAGONALE INTERNE
	77	948021 00000	JOINT
	78	913161 00000	ANNEAU-O
	83	006800 27300	CARTER PROTECTEUR
	84	060901 16300	AMORTISSEUR
	85	741310 50000	AMORTISSEUR EN CAOUTCHOUC
	86	949402 00000	RONDELLE
	87	947001 00000	ECROU A 6PANS
	88	006801 27400	CARTER PROTECTEUR
	89	741309 00000	AMORTISSEUR EN CAOUTCHOUC
	90	945318 00000	VIS HEXAGONALE INTERNE
91	951922 00000	ELEMENT EN CAOUTCHOUC	
94	015100 27300	PIED	
95	951921 00000	ELEMENT EN CAOUTCHOUC	
96	068000 27600	DONILLE D'ECARMENT	
97	945363 00000	VIS HEXAGONALE INTERNE	
98	949451 00000	RONDELLE	
102	968104 00000	PIECE D'ECARTEMENT CAOUTCHOUC	
103	029600 16300	BOULON	
126	736000 99613	SOUPAPE REGLAGE VIDE	
127	728002 99611	SOUPAPE REGLAGE PRESS.	

<sup>1)</sup> quantité nécessaire / entretien

**T 4.10 DV** (1~) Fabrication - AC monophasé

Articles divergents vis-à-vis de l'appareil standard, voir annexe (dos du dessin / du plan)

EN OPTION


Index	Pos.	No. Identification	Designation
<b>T 4.16 DV</b>	15	020000 16300	PISTON
	16	016800 16300	DISQUE DE SERRAGE
	17	911009 00000	BAGUE STAR
	18	949203 00000	DENT DISQUE
	19	945320 00000	VIS HEXAGONALE INTERNE
	21	000105 16300	CORP DE POMPE
	23	945321 00000	VIS HEXAGONALE INTERNE
	24	901347 00000	<b>PALETTE DE CHARBON (7x)<sup>1)</sup></b>
	28	000705 16300	COUVERCLE
	29	945372 00000	VIS HEXAGONALE INTERNE
	30	008901 16300	JOINT
	61	004800 27400	COUVERCLE DU FILTRE
	67	009000 16300	RESSORT-JAME
	69	952009 00000	DOVILLE DE ETRAGE
	72	909519 00000	<b>CARTOUCHE FILTRANTE C 64/3 (1x)<sup>1)</sup></b>
	74	909542 00000	<b>CARTOUCHE FILTRANTE C 63 (1x)<sup>1)</sup></b>
	76	945325 00000	VIS HEXAGONALE INTERNE
	77	948021 00000	JOINT
	78	913161 00000	ANNEAU-O
	83	006800 27400	CARTER PROTECTEUR
	84	060901 16300	AMORTISSEUR
	85	741310 50000	AMORTISSEUR EN CAOUTCHOUC
	86	949402 00000	RONDELLE
	87	947001 00000	ECROU A 6PANS
	88	006801 27400	CARTER PROTECTEUR
	89	741310 90000	AMORTISSEUR EN CAOUTCHOUC
	90	945318 00000	VIS HEXAGONALE INTERNE
91	951922 00000	ELEMENT EN CAOUTCHOUC	
94	015100 27400	PIED	
95	951921 00000	ELEMENT EN CAOUTCHOUC	
96	068000 27600	DONILLE D'ECARMENT	
97	945323 00000	VIS HEXAGONALE INTERNE	
98	949451 00000	RONDELLE	
102	968104 00000	PIECE D'ECARTEMENT CAOUTCHOUC	
103	029600 16300	BOULON	
126	736000 99613	SOUPAPE REGLAGE VIDE	
127	728002 99611	SOUPAPE REGLAGE PRESS.	

<sup>1)</sup> quantité nécessaire / entretien

**T 4.16 DV** (1~) Fabrication - AC monophasé

Articles divergents vis-à-vis de l'appareil standard, voir annexe (dos du dessin / du plan)

EN OPTION

Index	Pos.	No. Identificazione	Designazione	
<b>T 4.10 DV</b>	15	020000 16200	ROTORE	
	16	016800 05000	DISCO DI FISSAGGIO	
	17	911001 00000	STAR-ANELLO TOLLERANZA	
	18	949203 00000	DISCO A DENTE	
	19	945320 00000	VITE ESAGONALE INTERNA	
	21	000100 16200	CARCASSA	
	23	945319 00000	VITE ESAGONALE INTERNA	
	24	901327 00000	<b>PALETTE DI CHARBONE (7x)<sup>1)</sup></b>	
	28	000700 16200	COPERCHIO	
	29	945364 00000	VITE ESAGONALE INTERNA	
	30	008901 16200	GUARNIZIONE	
	61	004800 27300	COPERCHIO FILTRO	
	67	009000 16300	MOLLA	
	69	952009 00000	SPINE DI RISCONTRO	
	72	909518 00000	<b>CARTUCCIA FILTRO C 44 (1x)<sup>1)</sup></b>	
	74	909554 00000	<b>CARTUCCIA FILTRO 35015 (1x)<sup>1)</sup></b>	
	76	945364 00000	VITE ESAGONALE INTERNA	
	77	948021 00000	ANELLO GUARNIZIONE	
	78	913161 00000	ANELLO-O	
	83	006800 27300	CAPOTO DI PROTEZIONE	
	84	060901 16300	AMORTIZZATORE	
	85	741310 50000	AMMORTIZZATORE IN GOMMA	
	86	949402 00000	RONDELLA	
	87	947001 00000	DADO ESAGONALE	
	88	006801 27400	CARTER DI PROTEZIONE	
	89	741309 00000	AMMORTIZZATORE IN GOMMA	
	90	945318 00000	VITE ESAGONALE	
91	951922 00000	ELEMENTO IN GOMMA		
94	015100 27300	PIEDE		
95	951921 00000	ELEMENTO IN GOMMA		
96	068000 27600	BOCCOLA DISTANZIATRICE		
97	945363 00000	VITE ESAGONALE INTERNA		
98	949451 00000	RONDELLA		
102	968104 00000	PEZZO DI SCOTAM. IN GOMMA		
103	029600 16300	BULLONE		
126	736000 99613	VALVOLA REGOLARE VUOTO		
127	728002 99611	VALVOLA REGOL. PRESS.		

<sup>1)</sup> quantità di ordinazione necessari / manutenzione

OPZIONALE

**T 4.10 DV** (1~) Modello - AC monofase

Vedere allegato (retro del disegno) per le posizioni divergenti dall'apparecchio standard 


Index	Pos.	No. Identificazione	Designazione	
<b>T 4.16 DV</b>	15	020000 16300	ROTORE	
	16	016800 16300	DISCO DI FISSAGGIO	
	17	911009 00000	STAR-ANELLO TOLLERANZA	
	18	949203 00000	DISCO A DENTE	
	19	945320 00000	VITE ESAGONALE INTERNA	
	21	000105 16300	CARCASSA	
	23	945321 00000	VITE ESAGONALE INTERNA	
	24	901347 00000	<b>PALETTE DI CHARBONE (7x)<sup>1)</sup></b>	
	28	000705 16300	COPERCHIO	
	29	945372 00000	VITE ESAGONALE INTERNA	
	30	008901 16300	GUARNIZIONE	
	61	004800 27400	COPERCHIO FILTRO	
	67	009000 16300	MOLLA	
	69	952009 00000	SPINE DI RISCONTRO	
	72	909519 00000	<b>CARTUCCIA FILTRO C 64/3 (1x)<sup>1)</sup></b>	
	74	909542 00000	<b>CARTUCCIA FILTRO C 63 (1x)<sup>1)</sup></b>	
	76	945325 00000	VITE ESAGONALE INTERNA	
	77	948021 00000	ANELLO GUARNIZIONE	
	78	913161 00000	ANELLO-O	
	83	006800 27400	CAPOTO DI PROTEZIONE	
	84	060901 16300	AMORTIZZATORE	
	85	741310 50000	AMMORTIZZATORE IN GOMMA	
	86	949402 00000	RONDELLA	
	87	947001 00000	DADO ESAGONALE	
	88	006801 27400	CARTER DI PROTEZIONE	
	89	741310 90000	AMMORTIZZATORE IN GOMMA	
	90	945318 00000	VITE ESAGONALE	
91	951922 00000	ELEMENTO IN GOMMA		
94	015100 27400	PIEDE		
95	951921 00000	ELEMENTO IN GOMMA		
96	068000 27600	BOCCOLA DISTANZIATRICE		
97	945323 00000	VITE ESAGONALE INTERNA		
98	949451 00000	RONDELLA		
102	968104 00000	PEZZO DI SCOTAM. IN GOMMA		
103	029600 16300	BULLONE		
126	736000 99613	VALVOLA REGOLARE VUOTO		
127	728002 99611	VALVOLA REGOL. PRESS.		

<sup>1)</sup> quantità di ordinazione necessari / manutenzione

OPZIONALE

**T 4.16 DV** (1~) Modello - AC monofase

Vedere allegato (retro del disegno) per le posizioni divergenti dall'apparecchio standard 


Index	Pos.	No. De pedido	Descripción	
<b>T 4.10 DV</b>	15	020000 16200	ÉMBOLO	
	16	016800 05000	ARANDELA TENSORA	
	17	911001 00000	ANILLO DE TOLERANCIA STAR	
	18	949203 00000	POLEA DENTADA	
	19	945320 00000	TORNILLO HEXAGONAL INTERIOR	
	21	000100 16200	CARCASA	
	23	945319 00000	TORNILLO HEXAGONAL INTERIOR	
	24	901327 00000	<b>EMPUJADOR DE CARBÓN (7x)<sup>1)</sup></b>	
	28	000700 16200	TAPA LATERAL	
	29	945364 00000	TORNILLO HEXAGONAL INTERIOR	
	30	008901 16200	JUNTA	
	61	004800 27300	TAPA DE FILTRO	
	67	009000 16300	MUELLE DE PRESIÓN	
	69	952009 00000	CASQUILLO TENSOR	
	72	909518 00000	<b>CARTUCHO DE FILTRO C 44 (1x)<sup>1)</sup></b>	
	74	909554 00000	<b>CARTUCHO DE FILTRO 35015 (1x)<sup>1)</sup></b>	
	76	945364 00000	TORNILLO HEXAGONAL INTERIOR	
	77	948021 00000	ANILLO DE JUNTA	
	78	913161 00000	JUNTA TÓRICA	
	83	006800 27300	CAPERUZA DE APARATO	
	84	060901 16300	TIRAS DE AMORTIGUACIÓN	
	85	741310 50000	AMORTIGUADOR DE GOMA	
	86	949402 00000	ARANDELA	
	87	947001 00000	TUERCA HEXAGONAL	
	88	006801 27400	CAPERUZA FRONTAL	
	89	741309 00000	AMORTIGUADOR DE GOMA	
	90	945318 00000	TORNILLO HEXAGONAL INTERIOR	
91	951922 00000	PIEZA DE ORMA DE GOMA		
94	015100 27300	PIE DE MOTOR		
95	951921 00000	PIEZA DE ORMA DE GOMA		
96	068000 27600	PIEZA DISTANCIADORA		
97	945363 00000	TORNILLO HEXAGONAL INTERIOR		
98	949451 00000	ARANDELA		
102	968104 00000	PIEZA DE GOMA DISTANCIADORA		
103	029600 16300	BULÓN		
126	736000 99613	VÁLVULA REGULADORA DE VACÍO		
127	728002 99611	VÁLVULA REGULADORA DE PRESIÓN		

<sup>1)</sup> cantidad necesario / mantenimiento

**T 4.10 DV** (1~) Versión - AC monofásica

Para posiciones que derivan del aparato standard véase apéndice (lado trasero del plano) 

OPCIONAL

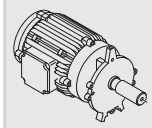
Index	Pos.	No. De pedido	Descripción	
<b>T 4.16 DV</b>	15	020000 16300	ÉMBOLO	
	16	016800 16300	ARANDELA TENSORA	
	17	911009 00000	ANILLO DE TOLERANCIA STAR	
	18	949203 00000	POLEA DENTADA	
	19	945320 00000	TORNILLO HEXAGONAL INTERIOR	
	21	000105 16300	CARCASA	
	23	945321 00000	TORNILLO HEXAGONAL INTERIOR	
	24	901347 00000	<b>EMPUJADOR DE CARBÓN (7x)<sup>1)</sup></b>	
	28	000705 16300	TAPA LATERAL	
	29	945372 00000	TORNILLO HEXAGONAL INTERIOR	
	30	008901 16300	JUNTA	
	61	004800 27400	TAPA DE FILTRO	
	67	009000 16300	MUELLE DE PRESIÓN	
	69	952009 00000	CASQUILLO TENSOR	
	72	909519 00000	<b>CARTUCHO DE FILTRO C 64/3 (1x)<sup>1)</sup></b>	
	74	909542 00000	<b>CARTUCHO-"C"-SEPARADOR C 63 (1x)<sup>1)</sup></b>	
	76	945325 00000	TORNILLO HEXAGONAL INTERIOR	
	77	948021 00000	ANILLO DE JUNTA	
	78	913161 00000	JUNTA TÓRICA	
	83	006800 27400	CAPERUZA DE APARATO	
	84	060901 16300	TIRAS DE AMORTIGUACIÓN	
	85	741310 50000	AMORTIGUADOR DE GOMA	
	86	949402 00000	ARANDELA	
	87	947001 00000	TUERCA HEXAGONAL	
	88	006801 27400	CAPERUZA FRONTAL	
	89	741310 90000	AMORTIGUADOR DE GOMA	
	90	945318 00000	TORNILLO HEXAGONAL INTERIOR	
91	951922 00000	PIEZA DE ORMA DE GOMA		
94	015100 27400	PIE DE MOTOR		
95	951921 00000	PIEZA DE ORMA DE GOMA		
96	068000 27600	PIEZA DISTANCIADORA		
97	945323 00000	TORNILLO HEXAGONAL INTERIOR		
98	949451 00000	ARANDELA		
102	968104 00000	PIEZA DE GOMA DISTANCIADORA		
103	029600 16300	BULÓN		
126	736000 99613	VÁLVULA REGULADORA DE VACÍO		
127	728002 99611	VÁLVULA REGULADORA DE PRESIÓN		

<sup>1)</sup> cantidad necesario / mantenimiento

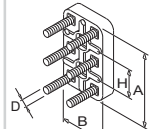
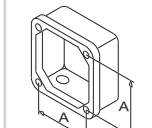
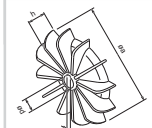
**T 4.16 DV** (1~) Versión - AC monofásica

Para posiciones que derivan del aparato standard véase apéndice (lado trasero del plano) 

OPCIONAL

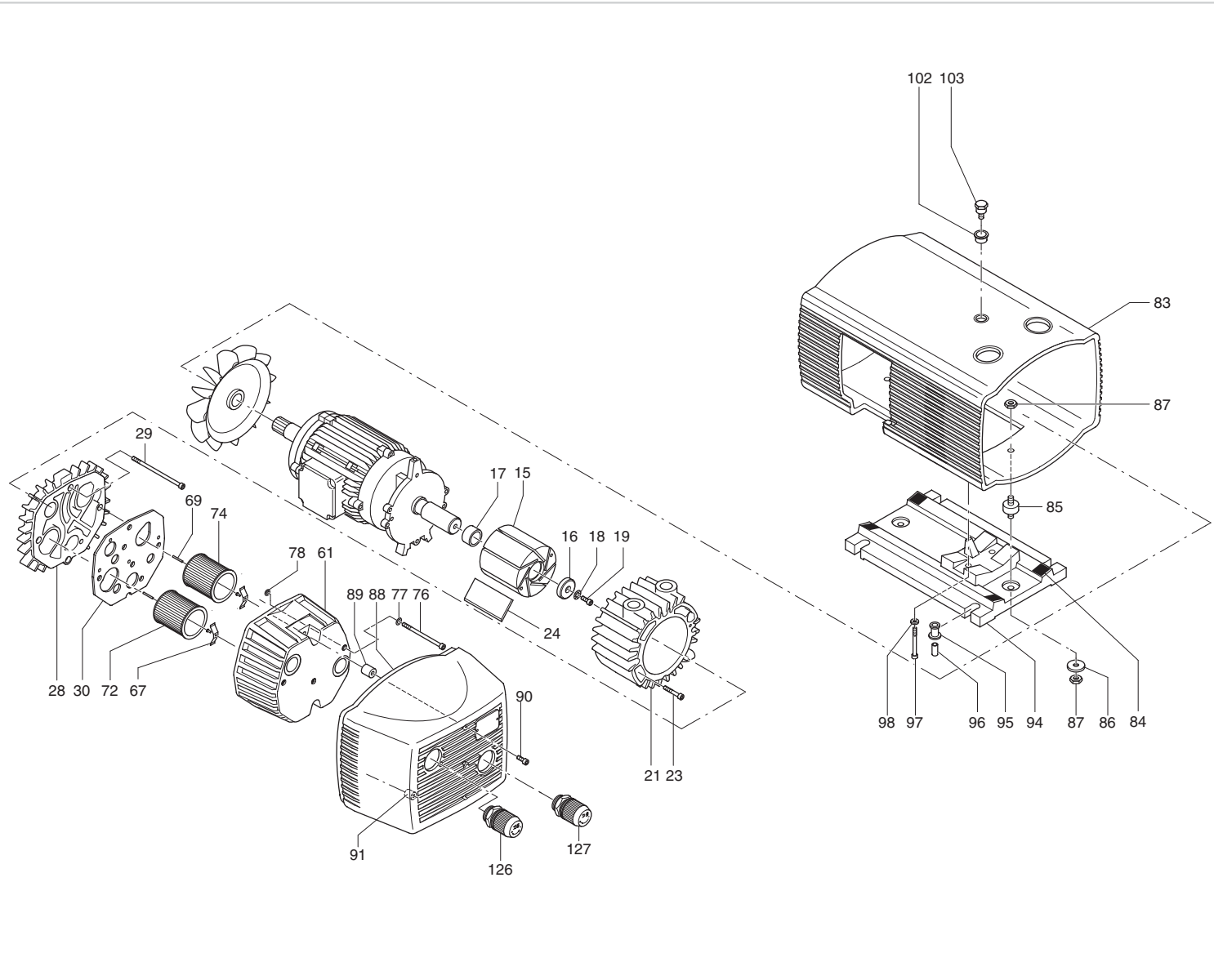
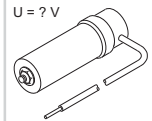


SERVICE ?



1~




C = ?  $\mu$ F  
U = ? V



standard

T 4.10 DV (3~)  
T 4.16 DV (3~)

optional  
en option  
opcionale

optional en option optionale opcional 	Variante(n) Modifications Variantes	Pos <sup>2)</sup>	Bestell Nr. / Ident No. / No. Identification / No. Identificazione / No. De pedido		Beschreibung / Description / Designation / Designazione / Descripcion
					
T 4.10 DV (1~)  T 4.16 DV (1~)	T 4.10 DV (1~)	5	964233 00000		WINKEL / BRACKET / COUDES / GOMITO / ÁNGULO
	T 4.16 DV (1~)	6	945204 00000		SECHSKANTSCHRAUBE / HEX. HEAD SCREW / VIS HEXAGONALE / VITE ESAGONALE / TORNILLO DE CABEZA HEXAGONAL
		7	947102 00000		SECHSKANTMUTTER / HEX.NUT / ECROU A 6PANS / DADO ESAGONALE / TUERCA HEXAGONAL
		8	742002 40000		KABEL / CABLE / CABLE / CAVO / CABLE
		83	006802 27300	<del>006800-27300</del>	T 4.10 DV HAUBE / PROTECTING HOOD / CARTER PROTECTEUR / CARTER DI PROTEZIONE / CAPERUZA
		83	006802 27400	<del>006800-27400</del>	T 4.16 DV HAUBE / PROTECTING HOOD / CARTER PROTECTEUR / CARTER DI PROTEZIONE / CAPERUZA

<sup>2)</sup> variantenabhängige Bauteile / variant-dependent components / composants variante-dependantes / componenti variante-dispendenti / componentes variante-dependientes